

START HERE



Set your students on the path
to learning excellence



LearnPath

LearnPath is an information curating tool that allows you to **collate, structure and digitally publish** targeted content and resources.

Softlink

softlinkint.com/edu

LearnPath users enjoy comprehensive support and free access to Softlink's LearnPath community content hub

curate

produce topic-specific, visually appealing guides using images, embedded searches, eResources, websites, text, video and more

publish

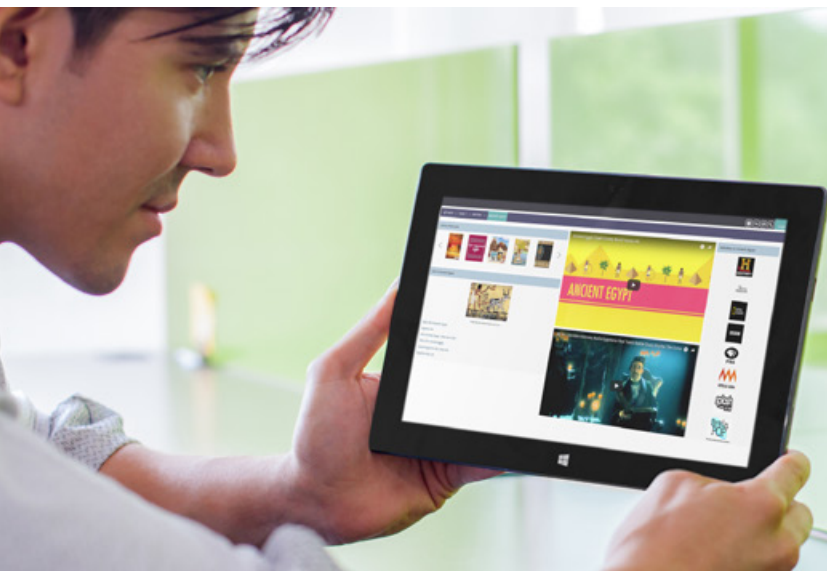
structure and present your guides to your audience using an unlimited number of hierarchies

promote

use your guides to teach critical thinking and information literacy and promote relevant resources to students and teachers

Key features of LearnPath

- ✓ Full integration with your library management system
- ✓ Attractive, customisable interface to match brand themes and colours
- ✓ Embed digital and interactive resources, reading lists, slideshows and other linked content
- ✓ Easy to use – no html or coding skills required
- ✓ Group relevant library and external resources together – maximise use of your library
- ✓ Set up navigation hierarchies with unlimited levels
- ✓ Fully web-based
- ✓ Quality support with access to local teams via email, phone or online customer portal
- ✓ Immediate access to an extensive library of ready-made content pages produced by experienced teacher librarians



Contact us for a free online demonstration

Softlink Australia

T: 1800 777 037

E: sales@softlinkint.com

Softlink Europe

T: +44 1993 883 401


E: sales@softlink.co.uk

Softlink Pacific

T: 0800 476 385

E: sales@softlinkint.com

Follow us on Twitter

 @SoftlinkEdu

“The support for this resource has been fantastic and the ease with which we have been able to develop good-looking pages has been part of the fun of LearnPath.”

Penny Roberts, Head of Library, Brighton Grammar School